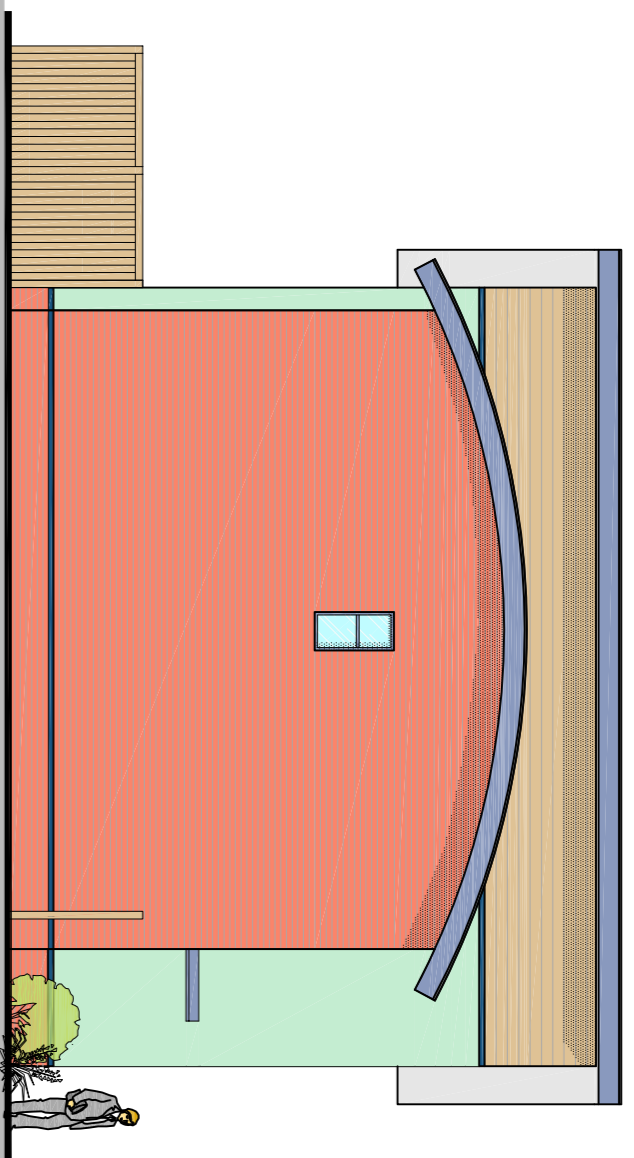
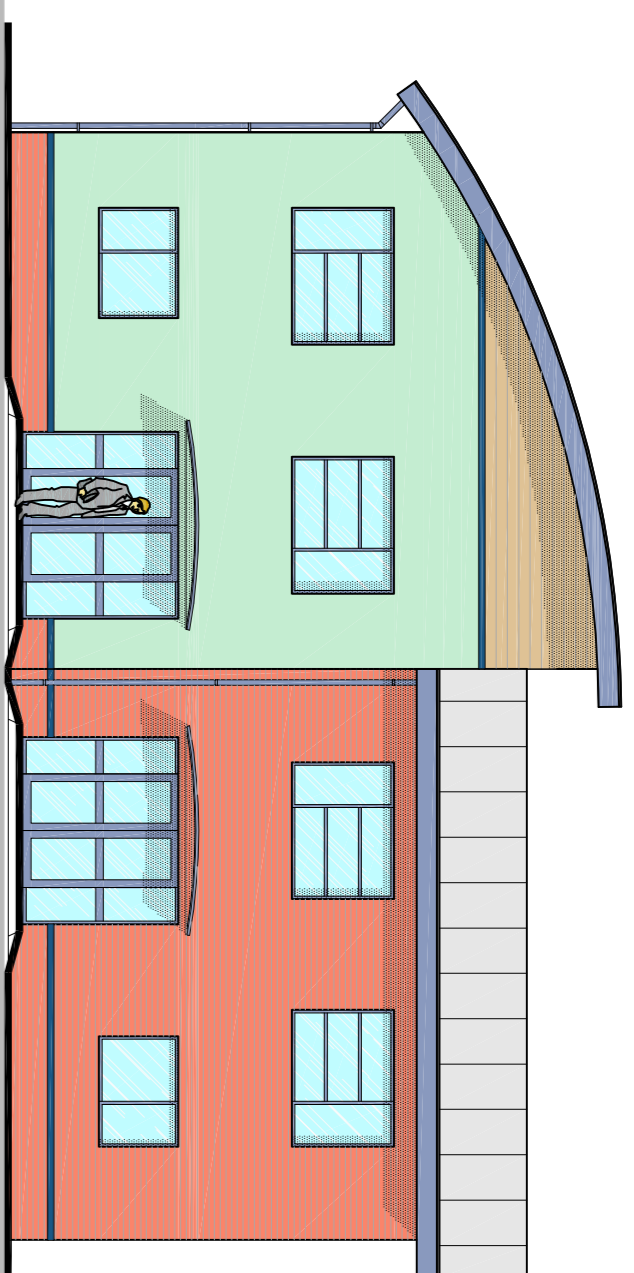


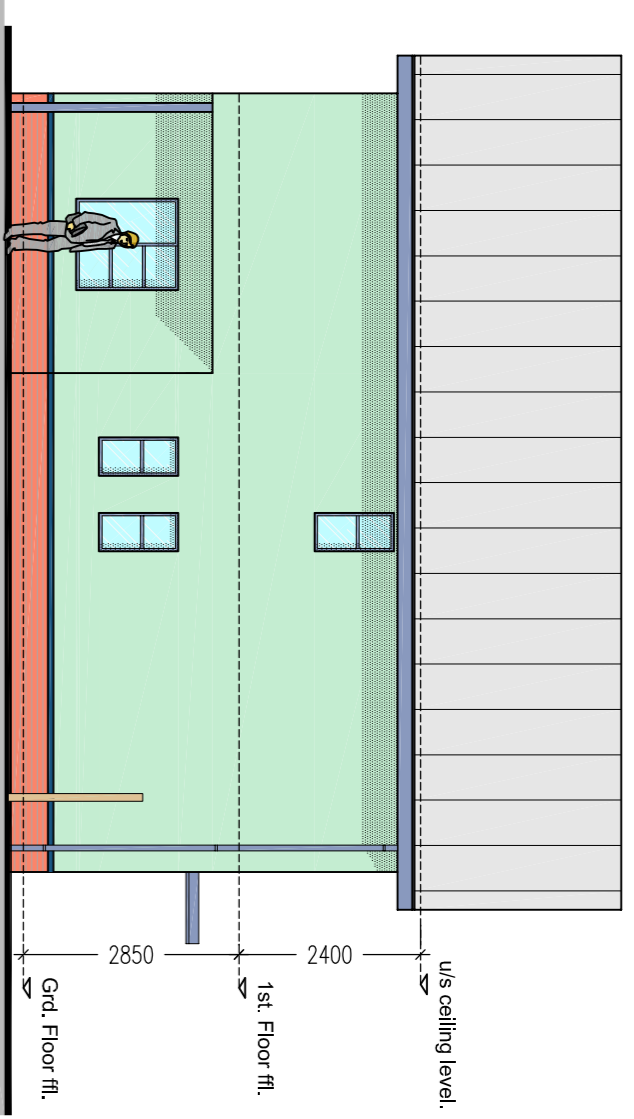
FRONT ELEVATION 1:100



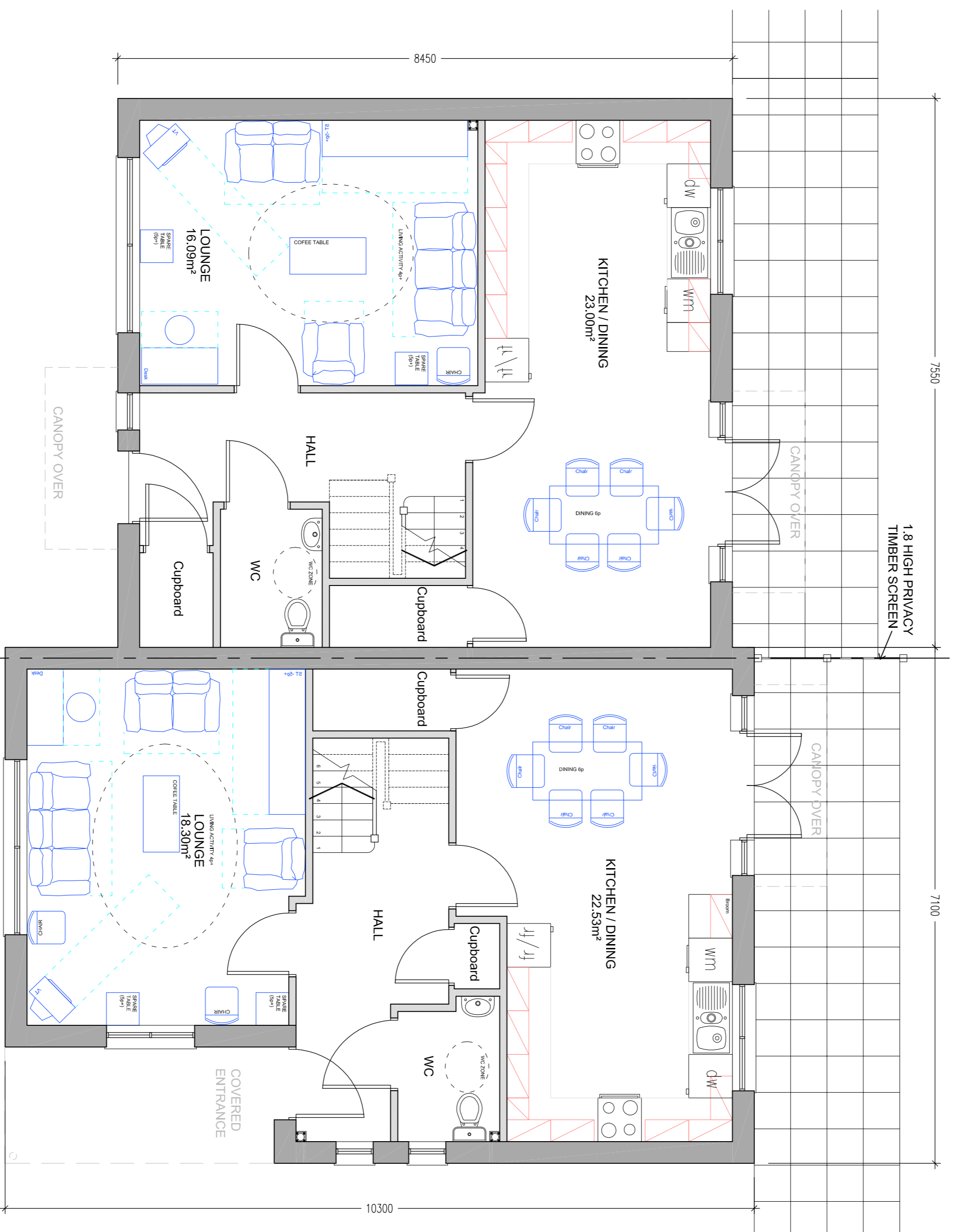
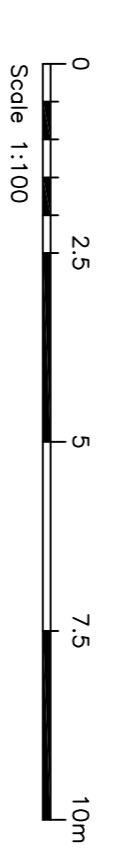
SIDE ELEVATION 1:100



REAR ELEVATION 1:100

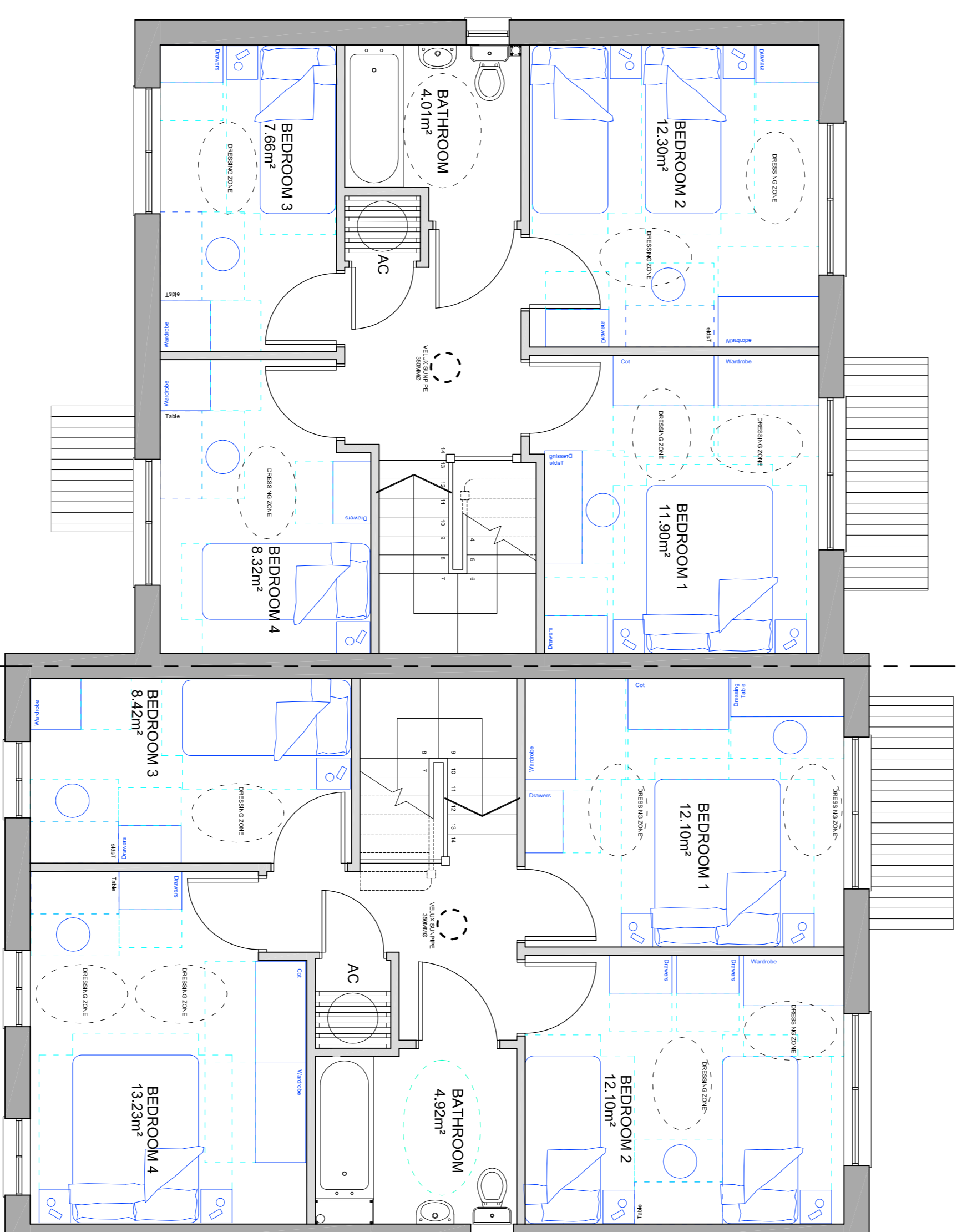
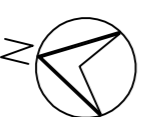


SIDE ELEVATION 1:100



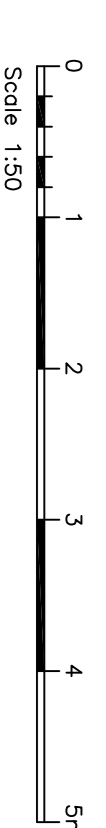
D2 GROUND FLOOR PLAN

D1 GROUND FLOOR PLAN



D2 FIRST FLOOR PLAN

D1 FIRST FLOOR PLAN



House Types D1
4 Bed / 7 Person Houses
Gross Internal Area 116.4 m²

House Types D2
4 Bed / 6 Person Houses
Gross Internal Area 114 m²

date	description	drawn	checked	rev no
27/07/09				

roberttombardellipartnership

 St Lukes House, 5 Wilton Road, Hitchin, Herts, SG4 8SP
 Tel: 01462 428318 Fax: 01462 441391
 email: rtp@roberttombardellipartnership.co.uk www.roberttombardellipartnership.co.uk
 Robert Tombardell Partnership Ltd

client: North Herts Homes
 project: New Affordable Housing Dev
 The Oaks and the Acorns Site
 School Lane, Luton.

title: House Types D1 + D2
 Proposed Ground and
 First Floor Plan & Elevations

scale: 1:50, 1:100@A1
 drawing no: 1621-014
 rev: P1
 © 2009 this drawing is copyright