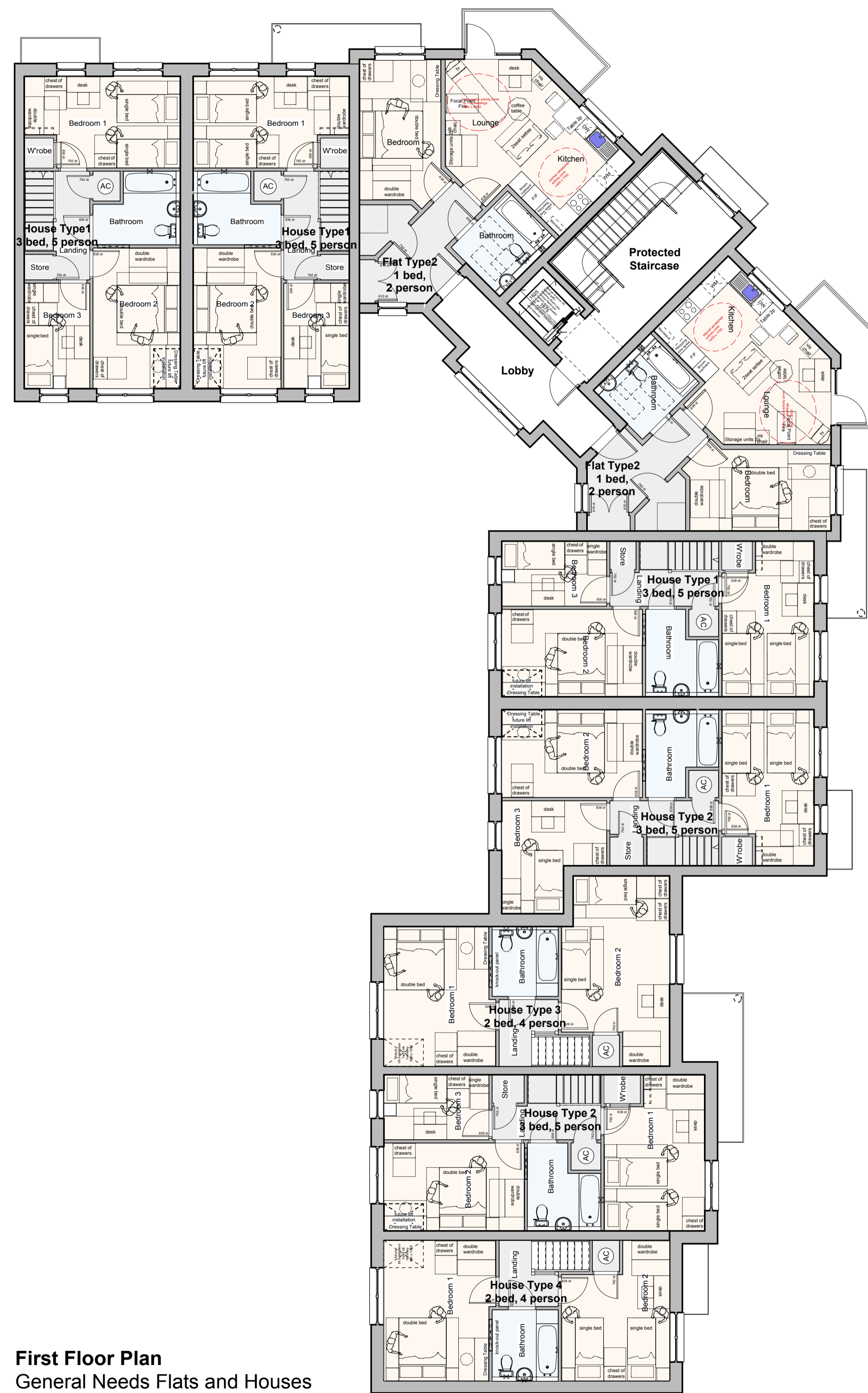


Ground Floor Plan
General Needs Flats and Houses



First Floor Plan
General Needs Flats and Houses

MATERIALS:

General:

Door & windows: Timber with dark grey aluminium external finish.

Soffit and Facias for Concrete tiled roofs: White painted Upvc.

Balconies: Galvanised and polyester powder coated metal - dark grey with glass balustrades.

Railings: Galvanised and polyester powder coated metal - dark black

	Brickwork
	Through colour render
	Horizontal cedar timber &g cladding
	Concrete tiled roof
	Zinc Roof/Canopies
	Solar Panels
	Glass balustrade with timber handrail
	Roof Light
	Automatic Opening Smoke Vent

Rev. A - 2010.01.27 Dotted line indicating the link on the first floor shown - DJ

FOR PLANNING

Kyle Smart Associates

Chartered Architects & Building Consultants
The Barn, Butchers Wick, Sewell, Nr Dunstable, Beds LU6 1RP
Tel: 01582 690222 Fax: 01582 690333
email: KyleSmart@KyleSmartAssociates.co.uk

Project: Cooks Way, Hitchin

Drawing: General Needs Flats and Houses - Ground and First Floor Plan

Scale: 1:100@A1 Drg No

Date: Sep 09 08065wd2.30 A

drawn by: CS/DP checked by:

